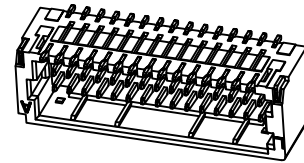
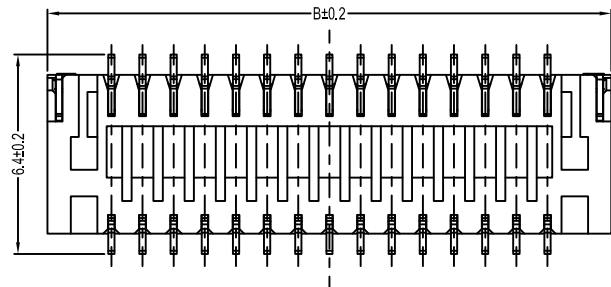
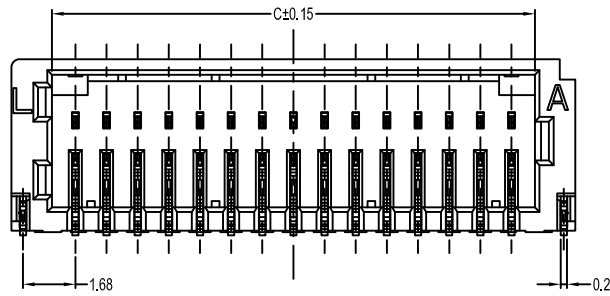
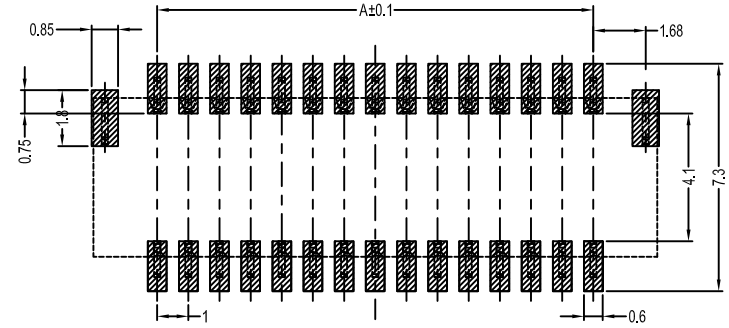
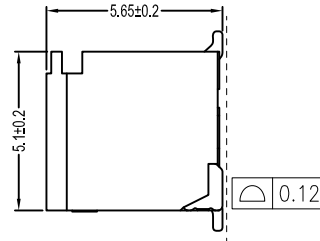
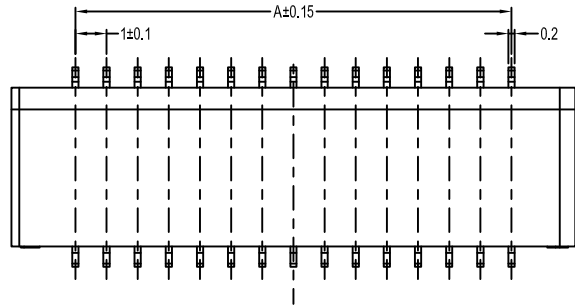


SH1.0型连接器承认图面

REV	SYM	REVISION RECORD	DR.	APPR.	DATE
A/0		原始版本			
A/1					



Poles	Part No.		Dimensions mm		
			A	B	C
10	A1001-SR05×2	SH1.0-2×05AWB	4.00	8.10	5.50
12	A1001-SR06×2	SH1.0-2×06AWB	5.00	9.10	6.50
14	A1001-SR07×2	SH1.0-2×07AWB	6.00	10.10	7.50
16	A1001-SR08×2	SH1.0-2×08AWB	7.00	11.10	8.50
18	A1001-SR09×2	SH1.0-2×09AWB	8.00	12.10	9.50
20	A1001-SR10×2	SH1.0-2×10AWB	9.00	13.10	10.50
30	A1001-SR15×2	SH1.0-2×15AWB	14.00	18.10	15.50
40	A1001-SR20×2	SH1.0-2×20AWB	19.00	23.10	20.50
50	A1001-SR25×2	SH1.0-2×25AWB	24.00	28.10	25.50

3	Soldering lug 焊片	Phosphor Bronze Tin 磷青铜镀锡	2	
2	Pin 插针	Phosphor Bronze Tin 磷青铜镀锡	N×2	
1	Housing 基座	PA9T (UL94V-0)	1	米色

序号	图号	名称	材料	数量	附注
未注公差		LHE ® 浙江联和电子有限公司 ZHEJIANG LIANHE ELECTRONICS CO., LTD			
X.° ±3°	X.X° ±0.5°	单位	比例	Design Units	SIZE 页码
>0-3	>3-18	>18-50	MM Only	METRIC	A4
±0.12	±0.15	±0.3	材料	图号	Part No.
制作	审核	批准	见图解	品名	SH1.0-2×NAWB (79)

日底图总号
底图总号
签字
日期