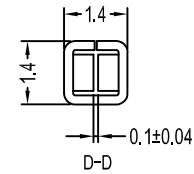
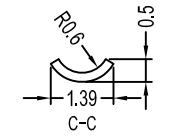
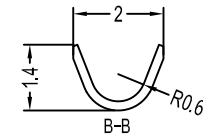
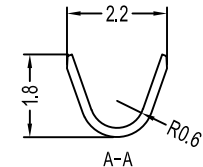
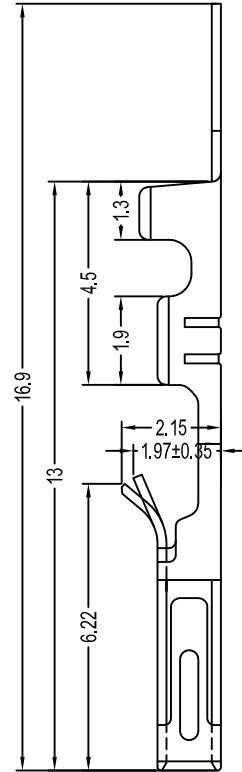
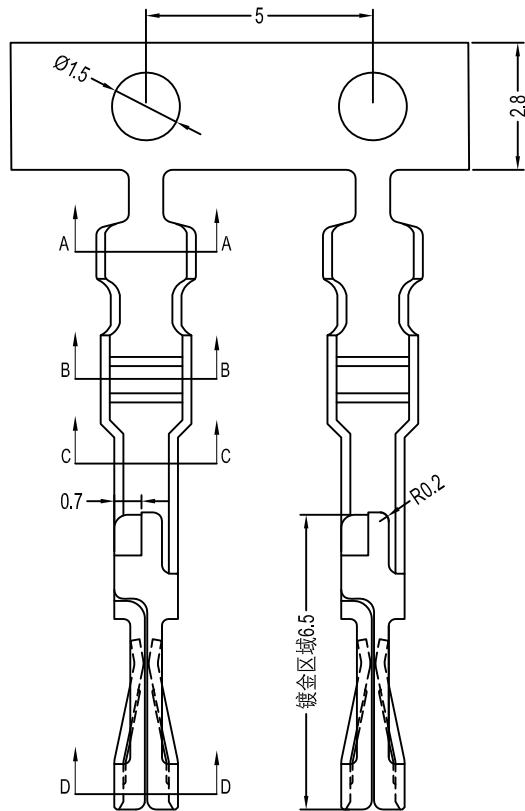


TJC8A型端子承认图面

| REV | SYM | REVISION RECORD | DR. | APPR. | DATE |
|-----|-----|-----------------|-----|-------|----------|
| A/0 | | 原始版本 | | | A/0 |
| A/1 | | 取消端子表面处理说明 | SH | | 20220413 |



主要技术参数 Main Specifications

线数 (poles): 2 to 24P
 额定电流 (Current rating): 3.0A AC, DC
 额定电压 (Voltage rating): 250V AC, DC
 温度范围 (Temperature range): -25°C to +85°C
 接触电阻 (Contact resistance): ≤20mΩ
 绝缘电阻 (Insulation resistance): ≥1000mΩ
 耐电压 (Withstand voltage): 800V AC/minute
 适用线规 (Applicable wire): AWG #28 to #22
 适用基板厚度 (Applicable PC board thickness): 1.6mm

| Part No. | | Material | Finish | Qty/reel | | | | | |
|--------------------|------------|---|---------|----------|------------------|--------------|------|----|--|
| A2545-T11P | TJC8A-YT11 | Phosphor Bronze | TIN | 11000pcs | | | | | |
| 未注公差 | | LHE ® 浙江联和电子有限公司 ZHEJIANG LIANHE ELECTRONICS CO., LTD | | | | | | | |
| X.° ±3° X.X° ±0.5° | | | | | | | | | |
| >0-3 | >3-18 | >18-50 | >50-120 | 单位 | 比例 | Design Units | SIZE | 页码 | |
| ±0.12 | ±0.15 | ±0.3 | ±0.5 | MM Only | — | METRIC | A4 | | |
| 制作 | 审核 | 批准 | 材料 | 图号 | Part No | | | | |
| 见图解 | | | | 品名 | TJC8A-YT11 (158) | | | | |

旧底图总号

底图总号

签字

日期